

Welcome 5th Grade Families!

Transition to
Inver Grove Heights Middle School



Introductions...

Jodi Wendel

Principal

Jason Voss

Assistant Principal

Jesse Hannes

Behavior Administrator

Courtney Norman

Student Success Coach

Jennell Garten

Counselor A-K

Jess Maloney

Counselor L-Z

Kaela Delmont

Social Worker

Ellen De Grand

Lead Special Education Teacher

Our Values

(same as the elementary)

Spartan Strong - Within

Spartan Strong - Together

Spartan Strong - Spaces

* We teach what this looks like and sounds like in all areas of our school.



Spartan Norms

Developed by the ISD 199 Student Advisory Council of 2022-2023 and refined by students throughout ISD 199.

Respectful Language

- Be positive with what you say and how you say it.
- No foul language, swearing, insults, slurs, or discriminatory words or actions.
- Think before you speak, and don't say something you will regret.

Respect Toward Others

- Listen and be open-minded.
- Respect the opinions and views of others.
- Know when to stop or draw the line on sharing your opinions.

Conflict Resolution

- When you see something, say something. Don't be a bystander. Confidentially let an adult know.
 - Have a resolution mindset: Seek to understand and find a solution that can satisfy all sides.
 - Be cautious with your words, and don't push people's limits.



Middle School is...

bridge between elementary, high school & beyond

New opportunities - classes, sports, activities

New classmates (one class of 20-30 to classes of 25-35)

Teachers specialize in content & working with adolescents

Spend time getting to know our students

Develop and change friendships

What does it mean to be in middle school?

Focus Areas:

- Social Emotional Development
- Core Life Skills (communicate, problem-solve, collaborate, persevere, build relationships, advocate, goal-setting)
- Career & College Readiness (interest inventory, learning style inventory, GPA, career exploration)
- Academics



IGHMS Academic Goals

- Equity and rigor for all students
- Opening pathways for students to push themselves academically no matter their academic level
 - Prepares students to choose advanced, AP and concurrent enrollment courses in high school



What is Advanced Coursework?

- Involves learning that is tailored to students.
- Provides instruction options at both standard and advanced levels.
- Instruction is provided in different formats
 - including large group, differentiated small group, and individual or independent learning
- All students can engage in differentiated learning, projects, and assignments.

We are an AVID National Demonstration school..

What does that mean?

- WICOR - Writing, Inquiry, Collaboration, Organization, Reading
- Teachers trained in best practice - higher level thinking, higher level of questions, critical reading
- Consistency among all classrooms
- Binder system - required for all students (organization, learning tool)
- AVID Elective class -
 - 7th & 8th grade only - Student interest is a must!

IGHMS Grade 6th - 8th Course Sequence

(Class of 2031)

Grade 6 Course Pathways 2024-25	Grade 7 Course Pathways 2025-26	Grade 8 Course Pathways 2026-27
Intro to Pre-Algebra <i>or Pre-Algebra</i>	Pre-Algebra <i>or Algebra I</i>	Algebra I <i>or Algebra II</i>
English (Writing) I	English II <i>or English III</i>	English III <i>or HS Communications 9</i>
English (Reading) I - <i>will cluster gifted readers into a class (3 quarters)</i>	Art (Full year)	STEM - (2 quarters) Science, Technology, Engineering, Math
Spartan Pathways 6 (1 quarter - Fall) Problem solving, conflict resolution, organization, digital citizenship, PBIS	Spartan Pathways 7 (1 quarter - Fall) Problem solving, conflict resolution, organization, digital citizenship, PBIS	Spartan Pathways 8 (2 quarters) Problem solving, conflict resolution, organization, digital citizenship, PBIS- HS course planning / college & career
Earth Science	Life Science	Physical Science
MN History	U.S. History	Global Studies
Band/Intro to Band/ME/Choir + P.E. - (every other day)	Band/ME/Choir + P.E. - (every other day)	Band/ME/Choir + P.E. - (every other day)
Advisor Academic Support, Goal Setting, Student Recognition	Advisor Academic Support, Goal Setting, Student Recognition	Advisor Academic Support, Goal Setting, Student Recognition

Academics

How do we determine correct pathway?

Data from 4th & 5th grade

MCA Reading, Math, Science (Spring)

FastBridge - Reading & Math (Fall, Winter & Spring)

95th percentile - math acceleration

95th percentile - possible grade level subject acceleration

*6th grade - First real exposure to consistent writing, science and history instruction

Gifted Services at IGHMS

Rachel McLaughlin

1

ENRICHMENT

Middle school students have a weekly opportunity to meet with the GT specialist.

2

CLUSTER GROUPING

GT students are clustered into two advisory sections at each grade level to strengthen peer relationships. Students who are subject accelerated are also clustered into classes together.

3

SUBJECT ACCELERATION

Students who meet eligibility criteria are subject accelerated in math and English in order to earn early high school credit.

How do we compare to other districts?

District 197 - 5,200 students
<i>Secondary</i>
Middle (2) <ul style="list-style-type: none">● GT specialists at each middle school● Cluster classes● Co-teaching model● Accelerated math pathways● Enrichment for all● Early high school credit
High (1) <ul style="list-style-type: none">● AP● PSEO● CIS● Concurrent enrollment● Advanced classes

District 196 - 29,000 students
<i>Secondary</i>
Middle (6) <ul style="list-style-type: none">-Dependent upon middle school:<ul style="list-style-type: none">-Cluster grouping in core classes-School clubs-Competitions
High (4) <ul style="list-style-type: none">-No gifted-specific information noted

ISD 199 - 3,600 students
<i>Secondary</i>
Middle (1) <ul style="list-style-type: none">● Accelerated English & math (based on scores)● Early High School credit available in English & math● Cluster grouping for advanced students● Clustering for gifted enrichment in advisory (gr. 6-8)● After school enrichment (genius hour)● Student Leadership Councils
High (1) <ul style="list-style-type: none">● Honors● AP● PSEO, CIS & concurrent enrollment● Credit by assessment● Independent Study● Student Leadership Councils



ISD 199 Math Course Sequences and Options

Key	
□	Standard Sequence
□	Subject Acceleration
□	Advanced Placement (AP)

6th Grade	7th Grade	8th Grade	9th Grade	10th Grade	11th Grade	Electives
Intro to Pre-Algebra	Pre-Algebra	Algebra I	Intermediate Algebra II	Geometry or Honors Geometry	Algebra III or Honors Algebra III	College Algebra Concurrent Enrollment
Pre-Algebra	Algebra I	Intermediate Algebra II **HS Credit	Geometry or Honors Geometry	Algebra III or Honors Algebra III	AP Statistics	Honors Pre-Calculus
<p>To be eligible to graduate from Simley High School, a student must earn a minimum of 9 high school mathematics credits (3 years) including Algebra II, Geometry, and Algebra III as prescribed by the Minnesota Department of Education.</p> <p>Please note that these are minimum state requirements for graduation. Those planning on continuing their education at a post-secondary institution and/or continuing a career that is mathematics focused are highly encouraged to take a fourth year of math and science.</p> <p>Simley High School Course Guide: http://www.isd199.org/schools/simley/Class%20Registration/</p> <p>*10th grade students may double-up Geometry and Algebra III strands. ** Algebra II will be included on the high school transcript and will count as part of the student's high school GPA.</p>					**Honors Pre-Calculus	Statistics
					College Algebra Concurrent Enrollment	Technical Math
						AP Calculus AB
						AP Calculus BC
		AP Statistics				

Entrance Requirements	Subject Acceleration	Advanced Placement (AP) Courses
		Subject acceleration advances content beyond traditional grade level standards and sequences. <u>Core Data:</u> <ul style="list-style-type: none"> MCA/MAP scores \geq 95th percentile (Middle School) Credit by Assessment (High School) <u>Supplemental Data:</u> <ul style="list-style-type: none"> Previous math grades

Advanced Placement (AP)- Students may choose to take the AP exam to be considered for college credit. College credits are determined by AP scores and individual college AP credit policies.

Concurrent Enrollment- This course provides both high school and college credit at Inver Hills Community College. Grades and credits will appear on both the high school and college transcript.



ISD 199 English Course Sequences and Options

Key	
	Standard Sequence
	Subject Acceleration
	Advanced Placement (AP)
	College Credit

6th Grade	7th Grade	8th Grade	9th Grade	10th Grade	11th Grade	12th Grade
English Writing I w/ Adv Options (all students)	English II w/ Adv Options	English III w/ Adv Options	Communications 9 or Honors Communications 9	Communications 10 or Honors Communication 10	Communications 11 Concurrent Enrollment	Communications 12 CLEP
English Reading I w/ Adv Options					AP Language and Composition	AP Literature and Composition
English Reading II w/ Adv Options	English III w/ Adv Options	Communications 9 or Honors Comm 9 *HS Credit	Communications 10 or Honors Communication 10	Communications 11 Concurrent Enrollment	Communications 12 CLEP	Communications 12 CIS
<p>o be eligible to graduate from Simley High School, a student must earn a minimum of 12 high school English credits (4 years) as prescribed by the Minnesota Department of Education.</p> <p>Simley High School Course Guide: http://www.isd199.org/schools/simley/Class%20Registration/</p> <p>* Communications 9 will be included on the high school transcript and will count as part of the student's high school GPA.</p>				AP Language and Composition	AP Literature and Composition	

Entrance Requirements	Subject Acceleration	Advanced Placement (AP) Courses	College in the Schools (CIS)
	<p>Subject acceleration advances content beyond traditional grade level standards and sequences.</p> <p>Core Data:</p> <ul style="list-style-type: none"> MCA/MAP scores \geq 95th percentile (Middle School) Credit by Assessment (High School) <p>Supplemental Data:</p> <ul style="list-style-type: none"> Previous English/Reading grades 	<p>Students are able to open enroll into any Advanced Placement course within the recommended general course sequence. https://apstudent.collegeboard.org/exploreap/what-it-takes</p> <p>AP Exam scores may qualify for elective or general college credit depending upon the granting institution's guidelines: https://apstudents.collegeboard.org/getting-credit-placement/search-policies</p>	<p>Students taking College in the Schools (CIS) courses must meet the University of Minnesota's admissions criteria.</p> <p>Students will receive a grade on their Simley High School transcript as well as on their University of Minnesota transcript.</p>

Advanced Placement (AP)- Students may choose to take the AP exam to be considered for college credit. College credits are determined by AP scores and individual college AP credit policies.

College Level Examination Program (CLEP)- This course prepares students to take the CLEP exam with the possibility to earn college credit. Open to all grade 11 and 12 students.

Concurrent Enrollment- This course provides both high school and college credit at Inver Hills Community College. Grades and credits will appear on both the high school and college transcript.

College in the Schools (CIS)- This course provides both high school and college credit at the University of Minnesota. Grades and credits will appear on both the high school and college transcript.

Some general information about 6th Grade

- Around 285 students next year in 6th grade
- Split randomly into 2 different teams
 - Upper & Lower 6th grade areas with locker bays (backpacks)
- 5 classrooms in each team area
- Advisor teacher will be one of their classroom teachers

Bell Schedule - 8:30 - 3:20

Students allowed into building at 8:10

Breakfast in the cafeteria 8:10 - 8:25

1st Period	8:30 - 9:26	(Mindfulness @ 8:30)
2nd Period	9:30 - 10:21	
3rd Period	10:25 - 11:16	
4th Period	11:20 - 12:50	
1st Lunch	11:20 - 11:50	(6th grade - IGHMS side/7th grade - Simley side)
2nd Lunch	11:50 - 12:20	(6th grade - IGHMS side)
3rd Lunch	12:20 - 12:50	(7th grade & 8th grade advisor classes - IGHMS side)
4th Lunch	12:50 - 1:20	(8th grade advisor classes - IGHMS side)
Advisor	12:50 - 1:20	
5th Period	1:24 - 2:20	
6th Period	2:24 - 3:20	(School Announcements)

Activities/Sports - Get involved

- Sports - vary by season (individual sports only - wrestling, swim & dive, gymnastics, golf, & track)
- Activities - Theater & Community Education classes
- Students for Change (Formerly known as Student Council)
- Targeted Services - when available



Transition to middle school

- 5th grade tours at IGHMS - each elementary will come over in May
- Orientation Day - August 21, 2024
- Family Connections - Tuesday, September 3th
- 1st Day of school - Wednesday, September 4th (6th graders only)
 - WEB (Where Everyone Belongs) - 8th grade student leaders support our 6th graders throughout the school year - small groups.
- 1st Day of school - Thursday, September 5th (7th & 8th graders)

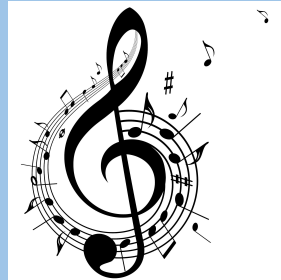
Communication between school and home

- Student-Led Conferences - Fall & Winter (set with advisory teacher)
 - In person or via Zoom
- Infinite Campus - schedule, end of trimester grades, attendance,
- Schoology - primary way teachers give and grade assignments, best way for families to see current and past work
- Daily Announcements - sign up in August
- Social Media - Instagram (IGHMS_Spartans)
- Schedules available on Orientation day in August



Quick Reminder

- Music Choice Form for 2024-25 School year
 - If you have not filled this out yet, please do so and have your child return it to their 5th grade teacher by February 10.
 - Band & Choir are a full year commitment! We cannot allow mid-year changes!



We look forward to
welcoming your child to our
middle school community!

